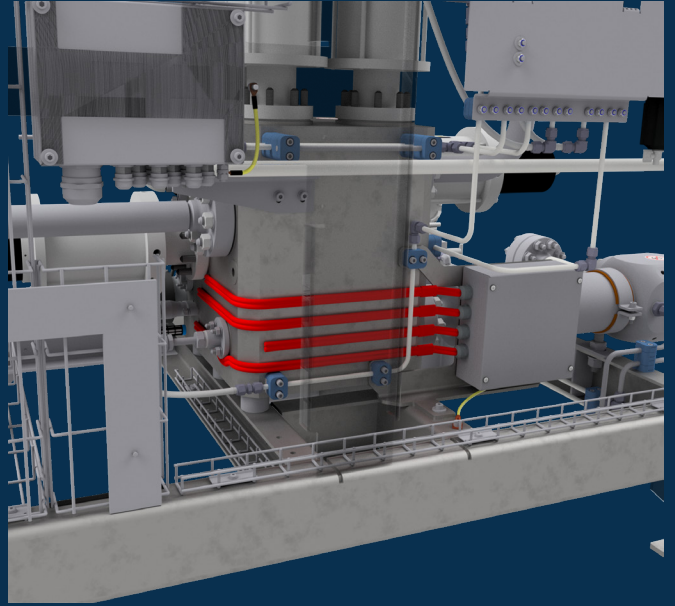


# Electrical Heating



Preliminary layout

## Product information

The heating solution is designed for marine LNG applications where stable Gas Valve Train performance is required under varying ambient conditions. It maintains critical component temperatures above defined limits, ensuring reliable operation and start-up of the GVT, even in low temperature environments.

The system is based on self-regulating heating cables installed directly on critical sections of the GVT. The cables automatically adjust their power output according to surface temperature, providing controlled and even heat distribution across the block.

Under cold conditions, the heating cables compensate for heat loss and maintain uniform temperature levels, reducing thermal stress on components. As temperature increases, power output is reduced automatically, preventing overheating and minimizing energy consumption.

Description	Electrical Heating
<b>Specifications</b>	
Temperature range	from -40°C up to +85°C
Material	Silicone rubber
Ingress protection	IP67
Maximum continuous exposure temperature	85°C
Minimum operating temperature	-40°C
Minimum installation temperature	-40°C
Power supply	230V AC
<b>Approval details</b>	
ATEX	CML 19ATEX3378
IECEX	CML 19.0121
DNV	TAE000027